

CITY STAMP

PROJECT INFORMATION

6527 N. NEWGARD AVE.
CHICAGO IL 60626

ARCHITECT OF RECORD

Mario Rosado architect
3013 W. Lyndale
CHICAGO, IL 60647
T.312.925.5131
mario@mariosadoarchitecture.com

EXPIRES: 11/30/2026

NOT FOR CONSTRUCTION

REVISION
NO. DATE ISSUE

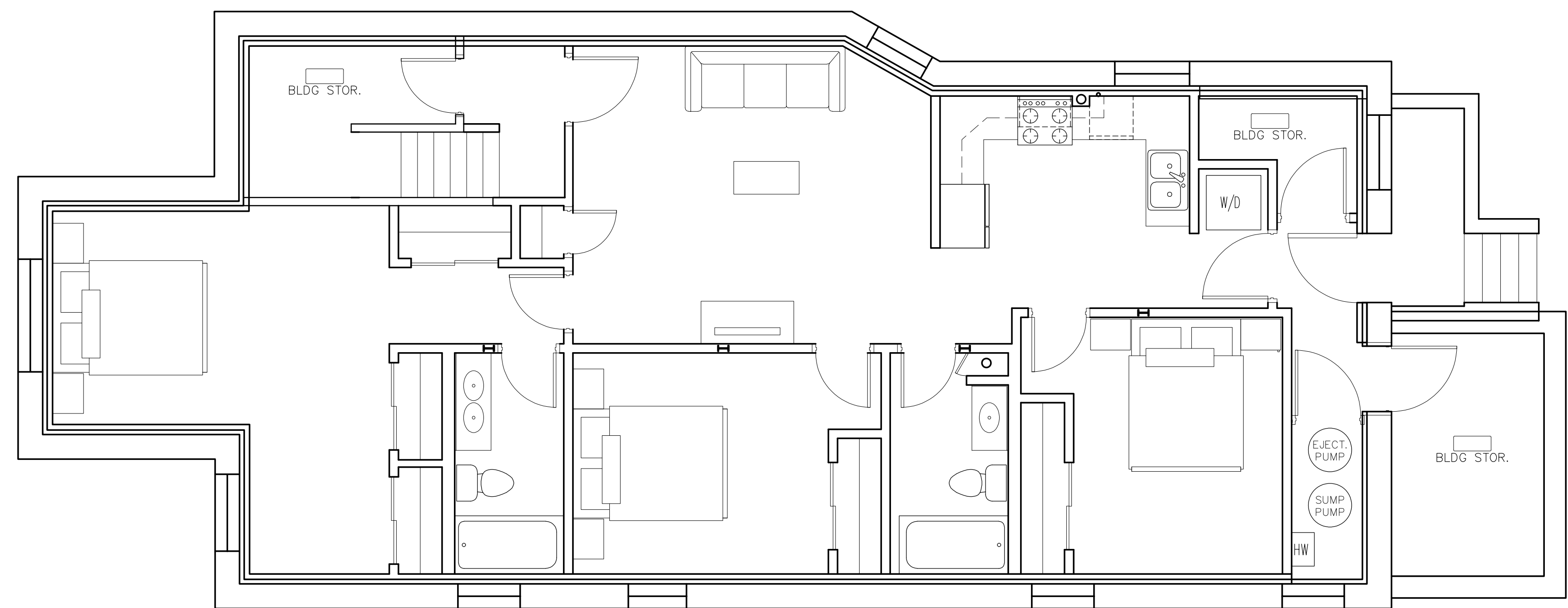
ISSUED DATE: 12/16/24
ISSUED FOR: 50% SCHEMATIC DESIGN
PROJECT #: 2420

SHEET TITLE

PROPOSED FLOOR PLANS AND NOTES

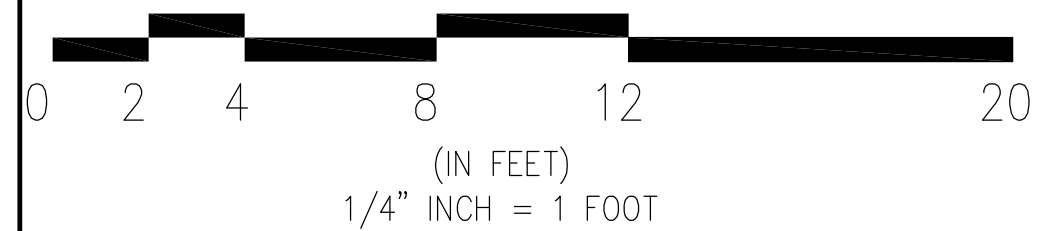
A1.0

SHEET NUMBER



LEGEND:

	NOT IN SCOPE		DOOR
	EXISTING WALL / PARTITION		STAIRS
	NEW PARTITION		STOVE
	DOOR NUMBER -SEE SCHEDULE		SINK
	WALL PARTITION -SEE SHEET A1.0		FRIDGE
	WINDOW TAG -SEE SCHEDULE		WC
	WINDOW		LAV
			TUB
			GLASS DOOR
			SHOWER



1. PROPOSED BASEMENT FLOOR PLAN
1/4"=1'-0"

